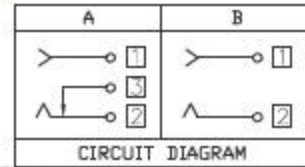


RECOMMENDED P.C.B. LAYOUT
UNSPECIFIED TOLERANCE: ± 0.05
(BOTTOM VIEW)



NOTES:

- ELECTRIC CHARACTERISTICS:
 - CONTACT CURRENT RATING: 4A.
 - CONTACT VOLTAGE RATING: 20V DC.
 - CONTACT RESISTANCE: 30mΩ MAX.;
 - DIELECTRIC WITHSTANDING VOLTAGE: 500V AC;
 - INSULATION RESISTANCE: 100MΩ MIN. AT DC 500V.
- MECHANICAL CHARACTERISTICS:
 - DURABILITY: 3000 CYCLES.
 - INSERTION AND EXTRACTION FORCE:
 - INSERTION FORCE: 30N MAX.
 - EXTRACTION FORCE: 3N MIN.
- ENVIRONMENT CHARACTERISTICS:
 - OPERATING TEMPERATURE: $-25^{\circ}\text{C} \sim +85^{\circ}\text{C}$.
 - HUMIDITY: 45~85% RH.

设计:	Arvin: 2016.03.08	范围 Range	公差 Tolerance
审核:	Arvin:	X.X ±	X.X ±0.30
校对:	Ru yi:	X.XX ±	X.XX ±0.20
比例:	视角关系:	X.XXX ±	X.XXX ±0.10
版次:	图框大小: A4	Angle ±	Angle ±5°

东莞市恒祺电子科技有限公司

名称: DC插座 型号: DC-037
料号:

共 张 , 第 张 备注: